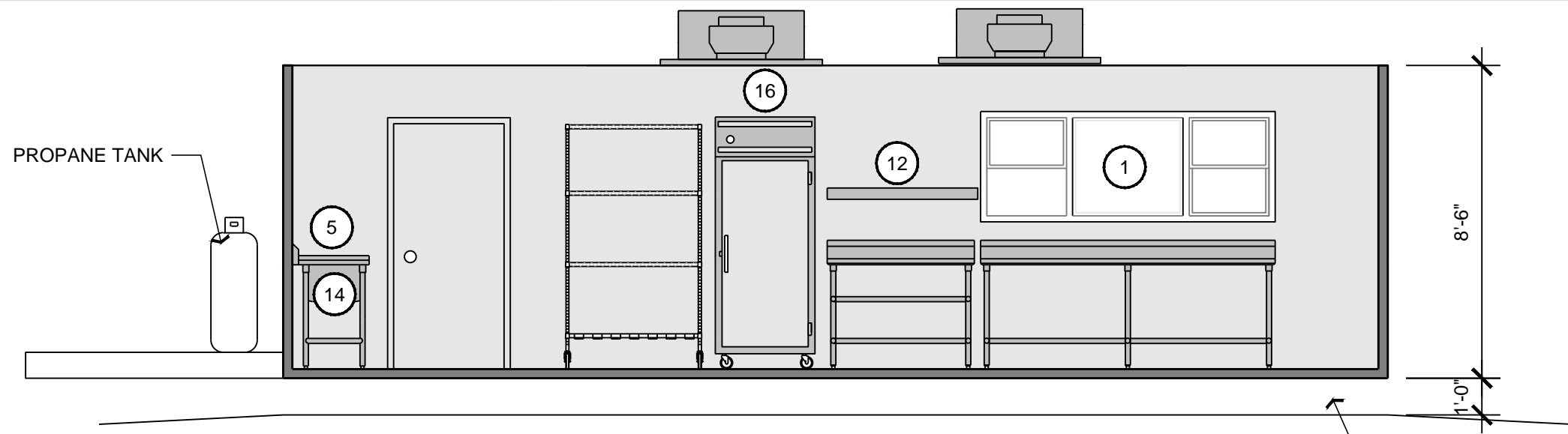
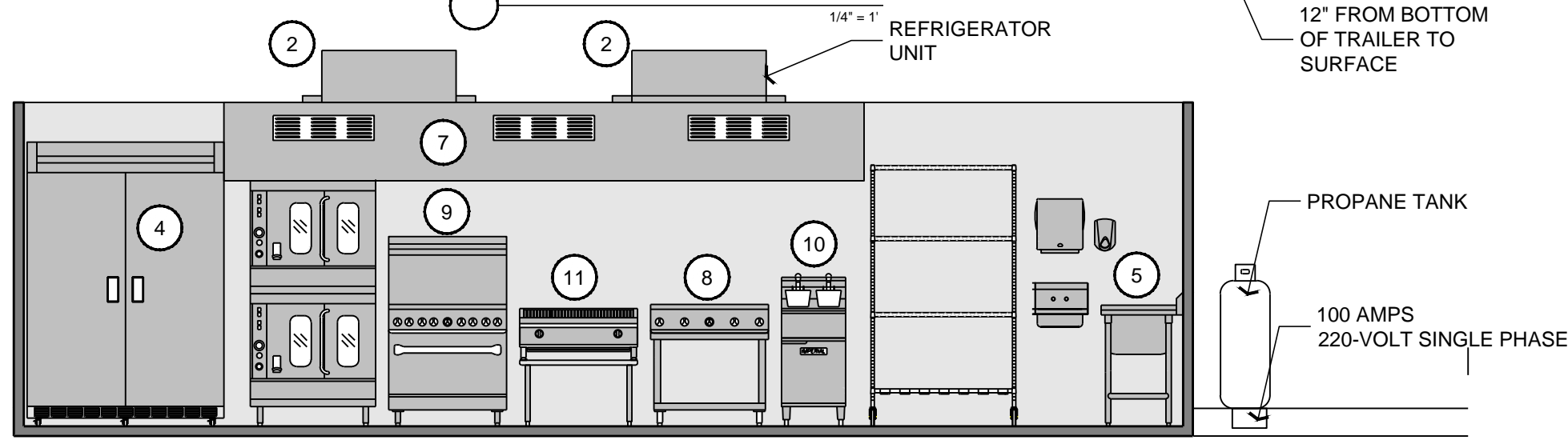


**EQUIPMENT CALLOUTS**

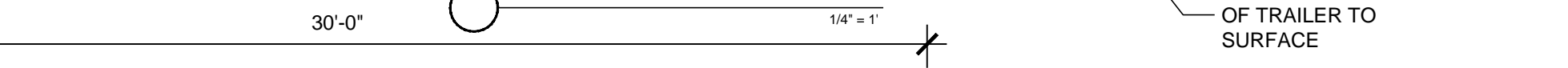
1. CONCESSION WINDOW
  2. HVAC UNIT (2)
  3. N/A
  4. TRUE TWO-DOOR REFRIGERATOR
  5. THREE-BASIN SINK (1)
  6. HAND SINK (1)
  7. EXHAUST HOOD W/FIRE SUPPRESSION
  8. STAR 36" FLATTOP GRIDDLE
  9. VULCAN SIX BURNER RANGE W/OVEN
  10. DEAN 40 LB. FRYER
  11. 36" CHAR-BROILER
  12. STAINLESS STEEL TABLE W/UNDER SHELVES (3)
  13. VULCAN DOUBLE CONVECTION OVEN
  14. UNDER-COUNTER DISHWASHER, LOW TEMP
  15. LIGHTS (NOT SHOWN)
  16. TRUE SINGLE DOOR FREEZER
  17. (N/A)
  18. NOT SHOWN:
    - A. ELECTRIC BRAKES AND HEAVY-DUTY SUSPENSION
    - B. EXTRA 120v 220 AMP OUTLETS
    - C. ALUMINUM WALLS AND ALUMINUM DIAMOND PLATE FLOOR
    - D. FIRE SUPPRESSION SYSTEM
- UTILITY CONNECTIONS
- ELECTRICAL: 100 AMPS, 220-VOLT SINGLE PHASE--
  - SUPPLY WATER: STANDARD HOSE BIB CONNECTION--
  - GRAY WATER: STANDARD RV STYLE HOSE CONNECTION--
  - PROPANE GAS: APPROX. 750,000 BTU OF CONNECTED EQP.



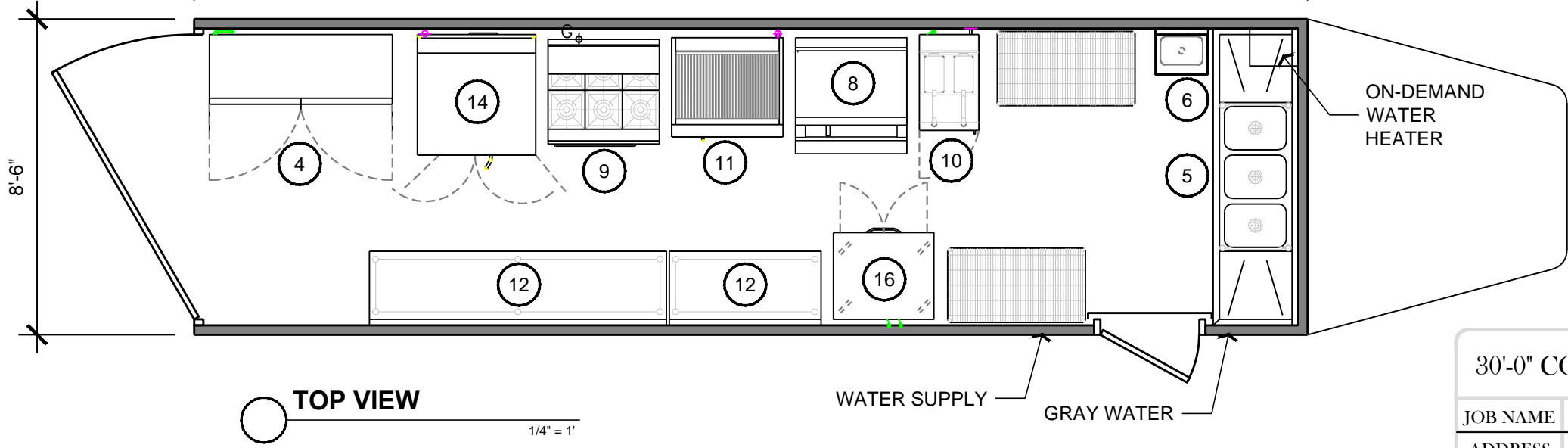
**SIDE INTERIOR ELEVATION**



**SIDE INTERIOR ELEVATION**



**TOP VIEW**



**30'-0" COMMERCIAL KITCHEN**

JOB NAME	
ADDRESS	
<b>CALIFORNIA MOBILE KITCHEN</b>	

